

# Mouse CD7 Protein

Cat. No. CD7-MM201

## Description

|                         |  |
|-------------------------|--|
| <b>Source</b>           | Recombinant Mouse CD7 Protein is expressed from HEK293 with His tag at the C-Terminus.<br>It contains Gln24-Pro150.                |
| <b>Accession</b>        | P50283   |
| <b>Molecular Weight</b> | The protein has a predicted MW of 15.3 kDa. Due to glycosylation, the protein migrates to 25-28 kDa based on Bis-Tris PAGE result. |
| <b>Endotoxin</b>        | Less than 1EU per µg by the LAL method.  |
| <b>Purity</b>           | > 95% as determined by Bis-Tris PAGE   |

## Formulation and Storage

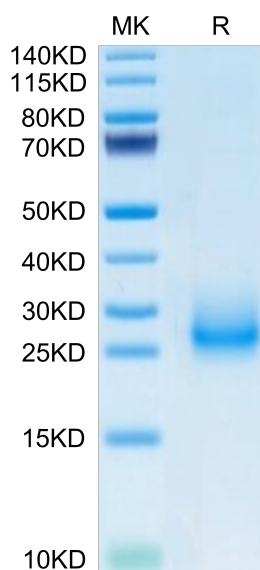
|                       |   |
|-----------------------|---|
| <b>Formulation</b>    | Lyophilized from 0.22µm filtered solution in PBS (pH 7.4). Normally 8% trehalose is added as protectant before lyophilization.  |
| <b>Reconstitution</b> | Centrifuge the tube before opening. Reconstituting to a concentration more than 100 µg/ml is recommended. Dissolve the lyophilized protein in distilled water.  |
| <b>Storage</b>        | -20 to -80°C for 12 months as supplied from date of receipt. -80°C for 3 months after reconstitution. Recommend to aliquot the protein into smaller quantities for optimal storage. Please minimize freeze-thaw cycles. |

## Background

CD7, also known as Leu-9, is an approximately 40 kDa glycosylated and palmitoylated transmembrane protein in the immunoglobulin superfamily. CD7 is expressed on T cells, NK cells, myeloid progenitor cells, and CD19 B progenitor cells. Among CD8 T cells, the CD7-bright population preferentially contains naïve and memory cells, while more weak expressors are primarily effector cells.

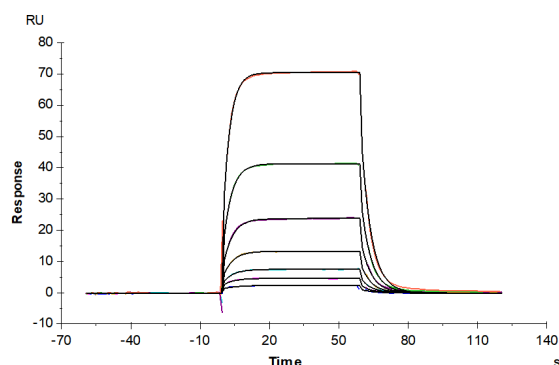
## Assay Data

### Bis-Tris PAGE



Mouse CD7 on Bis-Tris PAGE under reduced condition. The purity is greater than 95%.

### SPR Data



Human SECTM1, hFc Tag captured on CM5 Chip via Protein A can bind Mouse CD7, His Tag with an affinity constant of 4.46 µM as determined in SPR assay (Biacore T200) (QC Tets).